



ARUNDEL BIZ 2026

EXP

— Powered by  —

JANUARY 28, 2026

THE HOTEL AT ARUNDEL PRESERVE

CONNECT • LEARN • EXPAND

Supported by:



We're not
just a bank,
we're your
neighbor.



Member
FDIC

Your banking relationship isn't just a transaction to us - it's an investment in our community. Choosing The Bank of Glen Burnie as your banking partner means you are also reinvesting local dollars right back into our community. Your success is our success.

**Come grow with us and experience
what community banking is all about.**

INVESTING IN
LOCAL SUCCESS



CUSTOMER
TESTIMONIALS



BofGB.com | 410-766-3300

Commitment | Quality | Integrity | Independence | Community

Table of Contents

Sponsors.....	4
Welcome.....	5
Morning Schedule.....	6
Afternoon Schedule.....	7
Raffle.....	10
Map & Resources.....	11
Exhibitors.....	12
Annual Partners.....	16
Morning Speakers.....	17
AI Panel.....	20
Impact Report.....	24
Meet Our Keynote.....	25
Placemaking & Revitalization.....	26
Meet Your Afternoon Speakers.....	27
From Vision to Growth Panel.....	30
Access to Capital 101.....	34
AAEDC Mission, Team, Board.....	39
Expo Resources.....	40

PLATINUM



GOLD



SILVER



BRONZE



Welcome to the *Inaugural* Arundel Biz Expo!

Thank you for joining us at the first-ever Arundel Biz Expo. We're excited to welcome you for a full day of meaningful connections, expert insights, and opportunities designed to support your business in 2026 and beyond.

NETWORKING & REFRESHMENTS

Kick off the day at the Coffee Networking Hour, sponsored by *Rise Up Coffee Roasters*, from 8:30–9:30 a.m., and don't miss Grab & Go Sweet Treats from *Sweet Hearts Patisserie* from 2:00–2:15 p.m. Throughout the day, you'll have opportunities to connect with more than 300 attendees and nearly 50 business and resource partner exhibitors.

EXHIBIT HALL

Visit the exhibit halls to meet sponsors, resource partners, and B2B businesses owned by graduates of AAEDC's Inclusive Ventures Program (IVP).

EXPO RAFFLE

Hold on to your raffle ticket for a chance to win one of our amazing prizes, including gift cards, experiences, wearables, and consumables donated by local businesses. All attendees received an orange ticket, making you eligible for the main raffle prizes. If you arrived before 9:00 a.m., you also received a blue ticket, which makes you eligible for the morning raffle and first pick. You must be present to win, and the full raffle will take place at the end of the day.

SOUTHWEST ROUND TRIP TICKETS

Don't miss the last raffle drawing of the day, featuring two roundtrip Southwest Airlines tickets valued at \$400 each!

PARKING INFORMATION

Parking is free for Expo attendees. Simply download the Metropolis Parking App and enter your license plate at a kiosk outside the ballroom or scan one of the QR codes located inside the venue.

STAY CONNECTED

Follow @arundelbiz on Facebook, Instagram, and LinkedIn for real-time Expo updates and highlights.

In addition to all our sponsors please join us in thanking all the local businesses that contributed to the Maryland Tough Baltimore Strong Key Bridge Fund, which has made the Expo possible, as well as its administrator, the Baltimore Community Foundation.



Username:
INSPIREArundel

Password:
Inspire490!



MORNING SCHEDULE

8:30 AM – 9:30 AM

Coffee Networking Hour & Exhibit Hall Open

Sponsored by Rise Up Coffee

9:30 AM – 9:45 AM

Welcome, Morning Raffle & Icebreaker

Amy Gowan, Victoria Zelefsky

9:45 AM – 10:10 AM

Opening Session | The State of Our Economy: Key Tourism & Business Trends in Anne Arundel County

This session provides an overview of current tourism and economic indicators impacting Anne Arundel County. Hear from county leaders as they share real data, emerging trends, and insights that help business owners see the bigger picture and apply these findings to their own growth strategies.

Amy Gowan, Kristen Pironis

10:10 AM - 11:00 AM

Panel | Approachable AI: Turning Innovation into Everyday Business Tools

AI doesn't have to be complicated or intimidating. In this panel, industry experts break down how businesses of all sizes can realistically implement AI—whether you're just getting started or already experimenting with advanced tools. Learn practical use cases, lessons learned, and smart strategies for using AI to improve efficiency, decision-making, and growth.

Moderator: Victoria Zelefsky | Panelists: Sabrina Amjad, Tom Popomaronis, Kenny Clash, and Will Mapp III

11:00 AM – 11:30 AM

Keynote

In this keynote, Sandeep will share his inspirational journey as an entrepreneur with an incredible track record of success in strategic commercial real estate investments and business transformations. He will reflect on the challenges he has overcome, what drew him to invest in Anne Arundel County, and why the Annapolis Mall stood out as a compelling opportunity, offering attendees insight into its evolving vision.

Sandeep Mathrani

11:30 AM – 12:30 PM

Lunch & Exhibit Hall Open



AFTERNOON SCHEDULE

12:30 PM – 12:35 PM

Welcome Back & Remarks From Our Platinum Sponsor

Mark Hanna

12:35 PM – 1:30 PM

Panel | From Vision to Growth: Business Success Stories in Anne Arundel County

Local entrepreneurs share their real-world journeys of scaling successful businesses in Anne Arundel County. Learn how they accessed capital, mentorship, and technical assistance through AAEDC's Inclusive Ventures Program and other county resources—and how those tools helped turn opportunity into impact.

Moderator: Wes MacQuilliam | Panelists: Sharon Wilder, Saeed Ashrafzdeh, Zo Olumese, and Bailey Feldman

1:30 PM – 2:00 PM

Session | Scaling Smart Without Burnout

Learn why businesses often stall during growth and how to scale sustainably without owner burnout. This session breaks down the essential systems every growing business need, common mistakes to avoid, and practical steps to improve efficiency, profitability, and readiness for future growth—using real-world, local examples and free resources.

Dr. Candace Pruett

2:00 PM – 2:15 PM

Grab & Go Sweet Treats & Exhibit Hall Open

Sponsored by Sweet Hearts Patisserie

2:15 PM – 3:15 PM

Panel | Access to Capital 101: From Preparation to Approval

Designed for entrepreneurs and growing businesses, this session covers how to get loan-ready, what lenders review when evaluating applications, and key differences between conventional and alternative financing options.

Moderator: Will Holmes | Panelists: Katherine Hill Ritchie, Jason Weisberg, Anthony Williams, Steve Coppinger, and Steve Primosch

3:15 PM – 3:30 PM

Closing Remarks, Impact Report Preview & Raffles

Amy Gowan, Victoria Zelefsky, Steve Adams

LEADING LADY

Build Your Business. Lead with Confidence. Find Your Community.



The Leading Lady Business Hub

The *Leading Lady Business Hub* is built for women who need flexible, on-demand support with 24/7 access to business resources and coaching sessions in a virtual community of like-minded entrepreneurs.



- **Weekly live coaching calls** with AliceAnne Loftus, founder of *Leading Lady Coaching*, and industry experts
- **A collection of tools and resources** curated by Leading Lady Ambassadors
- **A private, supportive community** to connect with women entrepreneurs

Leading Lady Programs



Based in Annapolis, MD
Serving Women
Entrepreneurs Nationwide

- **Private Coaching**
(Personalized one-on-one business guidance)
- **Strategic Planning Day**
(Intensive business roadmap creation)
- **Group Masterclass**
(Collaborative learning with like-minded entrepreneurs)
- **The Collective (Annapolis, MD)**
(In-person connection, access to co-working space, and resources)

Have questions about our programs or want to explore how we might work together? We're here to help.

Explore Coaching, Programs, Resources, Events, and the Leading Lady Business Hub!



(Scan the QR Code)

PROGRAMS AND RESOURCES FOR EASIER COMMUTING IN MARYLAND



Baltimore Carpool Incentive Program

Earn \$5 per day for the first 90 days of carpooling.



Baltimore Vanpool Incentive Program

Vanpools receive \$500 a month toward the cost of their vans.



Transit Incentives Program

Commuters get free transit passes, and employers receive up to \$3,000.



CommuterCash

Earn rewards for commuting with the CommuterCash app.



Guaranteed Ride Home

6 free trips home per year for emergency situations.



Employer Partner Program

Free recognition and support for employers offering commuter benefits.



@CommuterChoiceMD

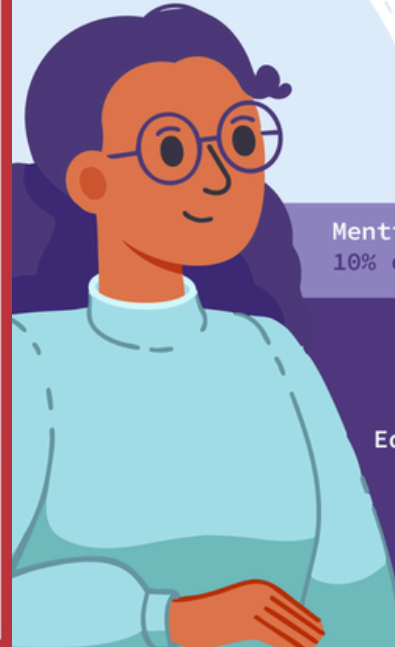


CommuterChoiceMaryland.com

Strata Language Services

OUR AREAS OF SPECIALIZATION INCLUDE:

- Education
- Medical
- Marketing
- Travel and Tourism
- Nonprofits
- Legal



Mention this ad and receive 10% off your first project!

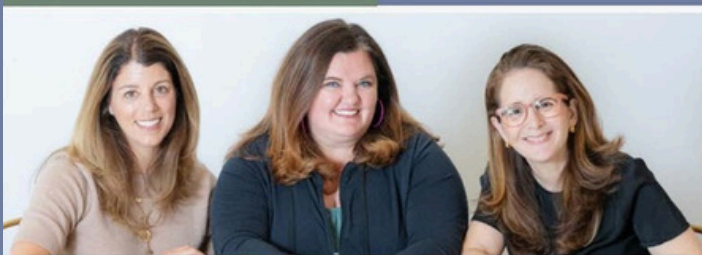
- Translation
- Interpretation
- Editing and Proofreading
- Bilingual Facilitation
- Voice Over/Dubbing
- And More!



WELLBEING IS A BUSINESS STRATEGY

We partner with organizations to support employee well-being and performance through evidence-based, engaging wellness experiences.

Workshops, Team-building Experiences, Retreats, Leadership Support, On-site Events, Consulting



Bring wellness to work.

A registered dietitian, a master personal trainer, and a licensed mental health therapist.

Listen to our Podcast



wellnessrebranded@gmail.com



Join the Tower Family

Share the value. Offer Tower membership as a no-cost benefit to your employees.

To learn how, and to hear about our exciting new member incentives, contact businessdevelopment2@towerfcu.org.



It's the **ARUNDEL BIZ EXPO** **RAFFLE!**



**KEEP YOUR TICKET FOR A
CHANCE TO WIN PRIZES FROM
LOCAL ARUNDEL BUSINESSES!**

Ashling Kitchen & Bar | \$100 Gift Card & Swag Basket

Ashling Kitchen & Bar | 2 Tickets to Private 4-Course Dinner

Auto Tag Connect | Emergency Roadside Kit

BD Provisions | Coffee Lovers Basket

Blendabowl | \$25 Gift Card & T-Shirt (2 Sets)

Bohemian Black | \$50 Gift Card

Bruster's Ice Cream | 12 Pints of Ice Cream (1 Per Month)

Caliente Grill | \$50 Gift Card

Clarity Riding | Free Riding Lesson Certificate

Comcast Business | Headphones & Backpack

Eat Sprout | \$40 Gift Card

iCode Gambrills | Parents' Night Out or One-Day Camp

Los Hermanos Tequila | Bottle of Tequila

McCormick Chocolate Co. | 4 Gourmet Hot Chocolates

NV Salon & Makeup Studio | Vegan Shampoo & Conditioner

People Rise | 1-hour Private Business Consultation

Pherm Brewing | \$25 Gift Card, Pint Glass & Beer (2 Sets)

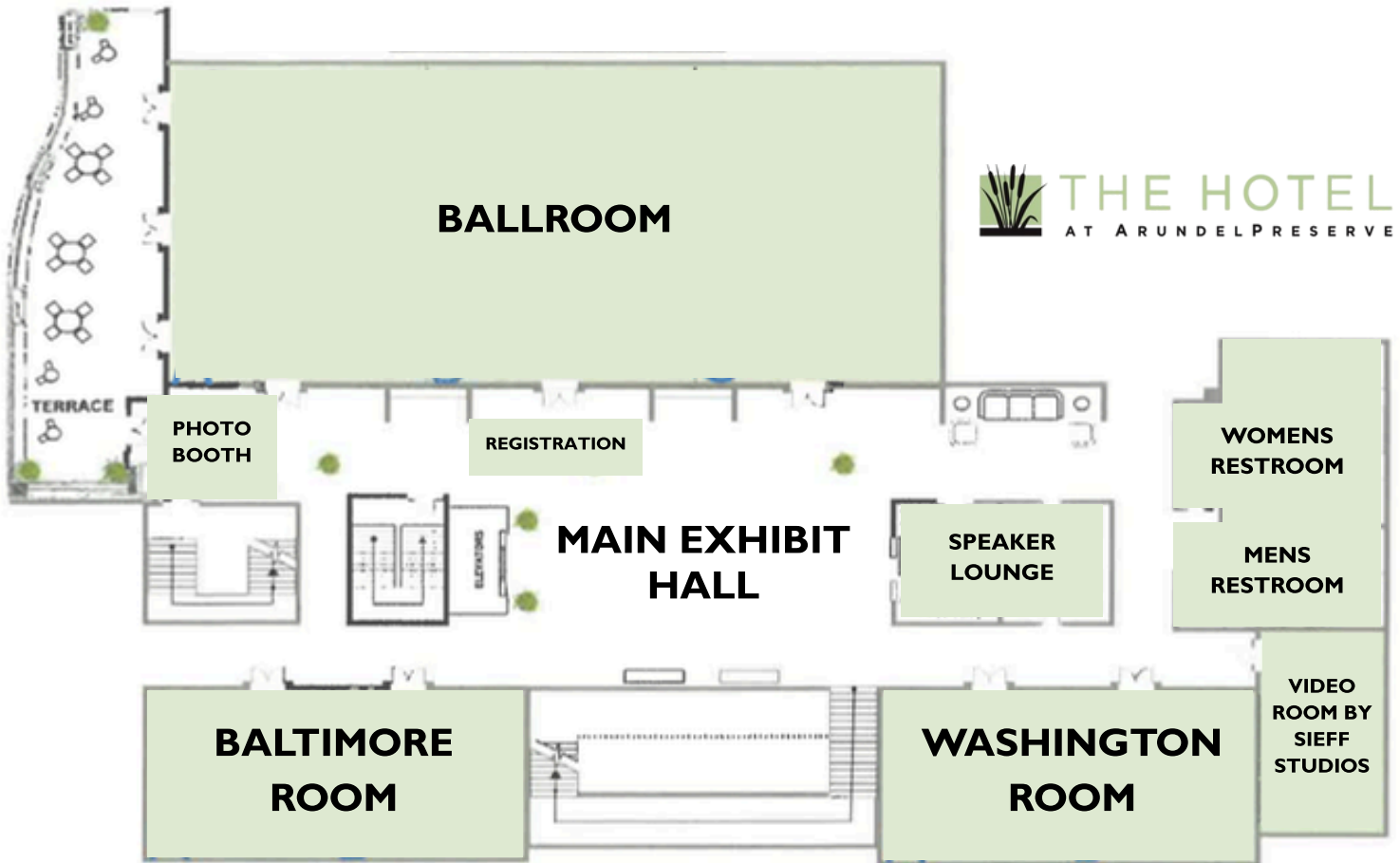
Rise Up Coffee Roasters | \$25 Gift Card & Swag

Southwest Airlines | 2 Roundtrip Tickets (\$400 Value Each)

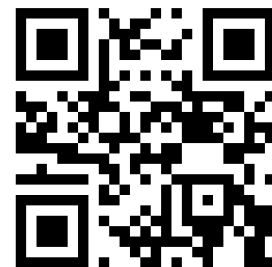
The Journey2Well | Team/Staff Wellness/Stress Management Workshop

Watermark | \$50 Gift Card (2 Sets)

Wild Kid Acres | Private Farm Tour for 5



**ACCESS EXPO
RESOURCES HERE**



MAIN HALL

Anne Arundel Community College
Anne Arundel County Purchasing Division
Anne Arundel Economic Development Corporation
Anne Arundel Workforce Development Corporation
Bank of Glen Burnie
Chesapeake Telephone Systems
Comptroller of Maryland
Fort Meade Executive Airport
Gable Signs
Leading Lady Coaching
Maryland Department of Commerce
Maryland Small Business Development Center
Maryland Saves
Mojo Creative Digital
People Rise
Rise Up Coffee Roasters
Sieff Studios
Summit Business Technologies
Sweet Hearts Patisserie
Tower Federal Credit Union
Visit Annapolis & Anne Arundel County
Warrior Medical Group

BALTIMORE ROOM

Alchemi Design*
Aprovechar Language Solutions*
Frontwood Strategies*
Himmel's Landscape & Garden Center*
J2 Education and Wellness
Journey 2 Well* (Wellness Nook)
Klean Krissia's Cleaning Services*
Strata Language Services*
The Mundaca Law Firm*
Wellness Rebranded*
ZOKPIA Accounting & Consulting*

**Graduate of the AAEDC Inclusive Ventures Program (IVP)*

WASHINGTON ROOM

Auto Tag Connect
Comcast Business
Dill Dinkers Pickleball
iCode Gambrills
Infiniti Pins
Magothy River Counseling
Maryland APEX Accelerator
Maryland Business Opportunity Center
Maryland Department of Transportation
Maryland Health Connection for Small Business
MDOT Commuter Choice Maryland
RedZone Technologies
University Technical Services



riseupcoffee.com

Gable.

WE'RE LEADING THE WAY.

Connecting People, Places & Brands
with Visual Communications

For over 45 years, Gable has proudly served the business community of Anne Arundel County and beyond. Our journey is far from over, especially when it comes to serving you as a long-standing member of the business community.

From early design development through custom fabrication and on-site services, we aim to turn your creative visions into reality.

Let us know how we can work together on your next project.

Design

Custom Signage

Digital Displays

Branded Environments

Wayfinding

On-Site Services



LET'S COLLABORATE
Visit gablecompany.com for
more information.





Sweet Hearts Patisserie

FINE HANDMADE PASTRIES

Gourmet Occasion Cakes • Decadent
Desserts • French Macarons • Gifts & Favors

1410 Forest Drive, Annapolis, MD

410.263.6513

www.SweetHeartsPatisserie.com

AACC CORPORATE TRAINING GROUP

Contact AACC today to start your development plan! Your organization's human capital is the heartbeat of your business. Nurture their well-being by proactively offering them development opportunities, ultimately growing and retaining your strongest performers.



www.ctgaacc.com
410-777-2732
ctg@aacc.edu

ALCHEMI DESIGN

AWARD WINNING

CREATIVE
LOGO • PRINT
DIGITAL MARKETING
SOCIAL • VIDEO
WEBSITE DESIGN

CELEBRATING 20 YEARS



ALCHEMIDESIGN.COM



Thank You to the Annual Partners Who Supported Our Work in 2025



AAEDC 2026 partnership program is a five-tier framework designed to strengthen collaboration with organizations committed to economic growth, innovation, and community impact in Anne Arundel County. Each partnership level provides a tailored mix of visibility, engagement opportunities, and access to AAEDC's signature initiatives—including the Arundel Biz Expo, Inclusive Ventures Program events, and A Taste of Arundel Grown—creating year-round opportunities to connect with the county's business community and leadership.

Partnerships activate immediately and are accepted on a rolling basis, allowing organizations to select a tier aligned with their strategic goals for visibility, leadership, and regional impact.



**Scan for more info about our
annual partnership opportunities
and to become a partner!**

Meet YOUR MORNING SPEAKERS

Opening Session

The State of Our Economy: Key Tourism & Business Trends in Anne Arundel County

This session provides an overview of current tourism and economic indicators impacting Anne Arundel County. Hear from county leaders as they share real data, emerging trends, and insights that help business owners see the bigger picture and apply these findings to their own growth strategies.



Amy Gowan

President and CEO - AAEDC

Amy Gowan serves as President and Chief Executive Officer of the Anne Arundel Economic Development Corporation (AAEDC), where she leads the organization's efforts to drive economic growth, business development, workforce initiatives, lending programs, and revitalization across Anne Arundel County. She brings more than two decades of experience in land use, housing, and community and economic development, with prior senior leadership roles in Howard County and the City of San Diego. Amy holds a Master of Public Administration with a specialization in city planning from San Diego State University and a Bachelor of Science from the University of Scranton and is actively engaged in regional economic development leadership throughout Maryland.



Kristen Pironis

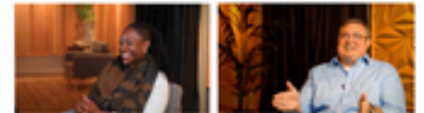
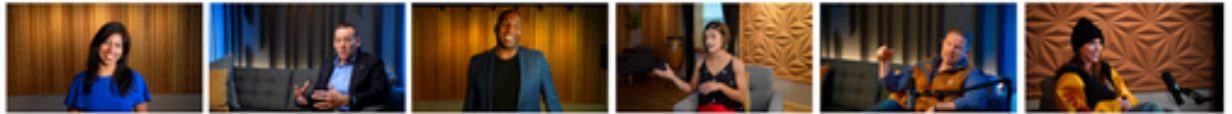
CEO - VAAAC

Kristen Pironis is chief executive officer of Visit Annapolis & Anne Arundel County. Alongside her team and industry partners, she advances a shared vision for destination stewardship that balances the visitor experience with resident quality of life. Pironis serves as vice chair of the Anne Arundel County Local Workforce Development Board and chair of the Maryland State Library Board. She holds a bachelor's degree in journalism from the University of Maryland and a master's in nonprofit and association management.

Video = ~~Content~~

BUSINESS INFRASTRUCTURE

Successful business development demands relationships built on **trust**.
Let's build your **strategy** and **brand** around **trust** to give you the advantage.



"ROI is immediately apparent."

- Peter



"It's literally the most valuable content I've ever created."

- Andrew



"Sieff Studios is a visual resource of excellence! The studio is filled with warmth, vibrance and authentic innovation..."

- Kiisha



Access Your Free
Pipeline Trust Score



★ Veteran-Owned
📍 Annapolis Studio

SIEFF STUDIOS
Video Growth Strategies

info@sieffstudios.com

410-205-5560

sieffstudios.com

No comprende?

NO PROBLEM!

Bridge **language training safety** gaps in your organization

We provide bespoke training and education solutions for multilingual, multicultural, and customer-centric companies.



Megan Miller, M.Ed, PMP

CEO, Aprovechar Language Solutions | Educational consultant | Keynote speaker

Let's talk!
www.aprovecharlanguagesolutions.com
hello@aprovecharlanguage.com

FRONTWOOD STRATEGIES

Reach Your Target Audiences

Small Business Communications Support

Frontwood Strategies is a Maryland-based full-service communications firm, from social media support to comprehensive branding services

Services Include:

- Six-Week Small Business Package
- Custom Coaching
- Full Service Support

Contact Frontwood Strategies to discuss which package is right for your business:
frontwoodstrategies.com/contact



Edgewater, MD

Indoor Pickleball, All Year. All Levels

Features:

- Court Reservations & Open Play
- Membership Opportunities
- Lessons & Clinics
- Leagues & Tournaments
- Corporate Events & Private Parties
- Youth Programming
- Pro Shop



Scan Here for more info!

3255 Solomons Island Road
 Edgewater, MD 21037



BUSINESS DEVELOPMENT AND SUPPORT FOR STARTUPS AND EXISTING BUSINESSES

Business consultants work one-on-one with entrepreneurs and small business owners, facilitating connections with public and private sector resources. Through outreach with fellow entrepreneurs, industry professionals, SBDC consultants, and local business resources, we aim to support your journey toward business growth and success.

About Us

The Maryland Business Opportunity Center (MBOC) supports entrepreneurship in underserved communities by providing access to capital and business opportunities. We focus on socially and economically disadvantaged individuals and businesses through comprehensive support services, including consultations and our no-cost technical subject matter expert services. MBOC is operated by the University of Maryland and partnered by the Maryland Small Business Development Center.

Our Mission

To cultivate and support efforts to grow and sustain businesses owned by minorities, women, veterans, disabled, and rural-based business owners to foster economic prosperity.

Businesses We Serve

- Minority-Owned
- Women-Owned
- Veteran-Owned
- Disabled-Owned
- Rural Based



SUBJECT MATTER EXPERT NO-COST SERVICES

- Government Certifications**
MBE/DBE/WOSB/SBE Application Assistance.
- Accounting & Bookkeeping**
Setting up systems for proper cashflow management, preparing financial statements.
- Commercial Real Estate**
Developing and executing strategies that stimulate business expansion.
- Website & e-Commerce**
Creating functional websites and e-commerce development.
- Marketing & Branding**
Creating marketing materials, strategies, and logo design.
- Human Resources**
Talent management, leadership development, and HR strategy.
- Financial Advisory**
Including personal & business credit repair, loan packaging, and financial forecasts.
- Legal Advisory**
Contract review, regulatory guidance, and intellectual property protection (copyright, patents, and trademarks).
- Prototyping**
Concept design and ideation for a minimal viable product.



REGISTER ONLINE
<https://marylandboc.org>

(240) 828-5205

7761 Diamondback Drive
 College Park, MD 20740

10:00 AM - 11:00 AM

Approachable AI: Turning Innovation into Everyday Business Tools

AI doesn't have to be complicated or intimidating. In this panel, industry experts break down how businesses of all sizes can realistically implement AI—whether you're just getting started or already experimenting with advanced tools. Learn practical use cases, lessons learned, and smart strategies for using AI to improve efficiency, decision-making, and growth.



Victoria Zelefsky (Moderator)

VP of Marketing and Communications - AAEDC

Victoria Zelefsky serves as Vice President of Marketing & Communications for the Anne Arundel Economic Development Corporation (AAEDC), where she leads strategic communications, brand positioning, marketing initiatives, public and government relations, and major events that support business growth and community revitalization across Anne Arundel County. She brings extensive experience across the public and private sectors, including leadership roles at The Menkiti Group and Bon Appétit Management Company, and is a member and featured writer for the Forbes Communications Council. Victoria holds a master's degree from the Peabody Institute of Johns Hopkins University and a bachelor's degree from the University of Northern Colorado.



Sabrina Amjad

Founder - Vanbri Consulting

Sabrina Amjad is the Founder of Vanbri Consulting, a worldwide advisory firm helping governments, economic development organizations, and Fortune 500 companies convert AI and emerging technologies into measurable operational and economic results. With nearly two decades of experience across the Americas, Australia, Asia, and the Middle East, she previously held senior leadership roles at Deloitte, EY, and Booz Allen Hamilton, leading large-scale modernization, technology adoption, and organizational change programs. Amjad is a global keynote speaker, known for her direct, results-focused approach that challenges leaders to move from experimentation to impact.



Kenny Clash

*Senior Director of Finance and Operations -
Intentional Philanthropy*

Kenny Clash is the Senior Director of Finance and Operations at Intentional Philanthropy in Bethesda, MD, where he leads finance, human resources, technology, and general operations for private foundations and philanthropic initiatives. He is also co-founder of Handteq, a Maryland-based software company focused on practical, user-centered solutions. Previously, Kenny leadership roles at the Enoch Pratt Free Library as Chief Innovation and Technology Officer and then Chief Operations Officer, Digital Harbor Foundation, and BrudgeEdu, driving technology innovation, operations, and workforce development. A U.S. Army Veteran and member of the Maryland State Board of Education, he is dedicated to expanding equitable access to AI and emerging technologies for students and educators, emphasizing responsible integration and career readiness.



Tom Popomaronis

Chief Executive Officer - Phantom IQ

Tom Popomaronis is the CEO of Phantom IQ, where he develops autonomous AI agents and multi-agent systems to drive operational efficiency for executive teams. A serial entrepreneur and AI innovation leader, he has published 1000+ articles in outlets including CNBC, Inc. Magazine, Entrepreneur Magazine, and Forbes, and contributes to Harvard Business Review and CIO Magazine on GenAI. Popomaronis mentors founders through Techstars and the Nasdaq Entrepreneurial Center, participates in the OpenAI Forum, and hosts TomTalks on LinkedIn, a long-form Q&A series with business leaders that reaches more than 44,000 senior executives.



Will Mapp, III

Chief Technology Officer - Qjarant

William Lee Mapp, III is an author, inventor, engineer, executive, and international speaker who has delivered talks across the U.S., Europe, and the Middle East, sharing his insights on technology, innovation, and business. He is a dynamic speaker who has inspired and entertained for SAP insider, Minority Innovation Weekend, EYECON, the National Retail Federation, RFID Journal Magazine, Blerdcon, and numerous non-profits and universities. Will holds patents, copyrights, and trademarks, and over a billion people have been impacted by the products he has created. Over the years he has served as radio host, technology analyst, podcast guest, and has written two books. His pursuits include designing and producing video games, writing, and mass media.

The JOURNEY 2WELL

Live Well. Feel Well. Be Well. **Help Well.**

201 Ridgely Ave, Suite A, Annapolis, MD 21401



What We Offer:

 Speaking Engagements

 Training

 Coaching & Mentoring

 Organizational Consulting

 Psychotherapy

Schedule a Consultation Today!

info@thejourney2well.com

301-970-9032

Lauren N. Jenkins LCPC, LPC, CCTP, C-DBT
Owner & Trauma Therapist



CONNECT *with us!*




WELCOME
TO THE
JOURNEY

www.TheJourney2Well.com

BeRevolutionary

- with -

Visit Annapolis & Anne Arundel County



Through strategic partnerships, industry education, and award-winning marketing and sales initiatives, Visit Annapolis & Anne Arundel County drives measurable economic impact and expands opportunities for local businesses and the community.

Guided by our commitment to **BeRevolutionary** in all we do, we invite the business community to partner with us in shaping a 2026 visitor experience that balances responsible growth with stewardship while strengthening visitation, workforce development, and the local economy.



- Visit -

ANNAPOLIS
& ANNE ARUNDEL COUNTY

VAAAC.org



cts
CHESAPEAKE TELEPHONE SYSTEMS



zoom

Gold Partner
at RingCentral

Simple. Secure. AI-Ready Communications for Businesses in Anne Arundel County

40+ Years of Trusted Business Communications—*Combining Local Expertise with Modern Cloud Solutions.*

For over 40 years, CTS has powered businesses with:

- VoIP, Cloud Phones & UCaaS
- Wi-Fi, Ethernet & Network Cabling
- Video Surveillance
- One-Stop Shop with Local Expertise

Power your business with CTS—delivering best-in-class UCaaS tailored to your organization's needs

- Reduce costs & simplify communication
- Work from anywhere on any device
- Integrate seamlessly with 300+ apps
- Backed by local support based in Millersville, MD

Let's Simplify Your
Communications



SCHEDULE A FREE CONSULTATION

☎ (410) 850-4848

🌐 chesapeaketelephone.com





IMPACT

2 0 2 5

REPORT

DOWNLOAD HERE |





Meet Our Keynote

Sandeep L. Mathrani

www.atlashillre.com

In this keynote, Sandeep will share his inspirational journey as an entrepreneur with an incredible track record of success in strategic commercial real estate investments and business transformations. He will reflect on the challenges he has overcome, what drew him to invest in Anne Arundel County, and why the Annapolis Mall stood out as a compelling opportunity, offering attendees insight into its evolving vision.

Mr. Mathrani serves as the Managing Partner of Atlas Hill RE, a real estate venture formed in 2024 that has invested in value-add opportunities. Assets under Management are \$500 million comprising the Annapolis Mall, Annapolis, MD and Galleria Fort Lauderdale, Fort Lauderdale, FL.

Mr. Mathrani joined Sycamore Partners as Managing Director in May 2023. He was responsible for providing real estate strategy for the portfolio, identifying financing for acquisitions by leveraging the real estate, and seeking out real estate opportunities.

Mr. Mathrani formerly served as the Chairman, Chief Executive Officer and Director of WeWork Inc. from February 2020 through May 2023. During his time at WeWork, he executed a strategic turnaround of the company.

Mr. Mathrani served as the Chief Executive Officer of Brookfield Properties' retail group and Vice Chairman of Brookfield Properties from August 2018 to January 2020. Mr. Mathrani also served as CEO of GGP Inc. for eight years, during which he recapitalized the company from bankruptcy in 2010 and led eight successful years of growth prior to the successful acquisition of GGP by Brookfield Property Partners in 2018 for a total capitalization of \$43 billion.

Prior to GGP, he served as the President of Retail at Vornado Realty Trust from 2002 to 2010 and was responsible for all retail real estate activities in the United States and India. Prior to Vornado, he served as an Executive Vice President at Forest City Ratner Companies, LLC from 1994 to 2002 and was responsible for its retail development and related leasing in the New York City metropolitan area.

Mr. Mathrani has served on the Board of Directors of Dick's Sporting Goods, Inc. since September 2020, Tanger Outlets since June 2021 and Lucky Strike Entertainment (fka Bowlero Corp.) since December 2021. He recently joined the board of Mindspace REIT in May of 2025. He is also a former Chair and current Executive Board member of the National Association of Real Estate Investment Trusts, as well as former Executive Board member and Trustee of the International Council of Shopping Centers.

Atlas Hill RE

Placemaking & Revitalization



GLEN BURNIE
Town Center



GLEN BURNIE
FARMERS MARKET

Meet YOUR AFTERNOON SPEAKERS

Welcome Back & Remarks by Platinum Sponsor: Bank of Glen Burnie



Mark Hanna

President & Chief Executive Officer - The Bank of Glen Burnie

Mark Hanna has more than 35 years of experience in the banking industry and currently serves as President and CEO of The Bank of Glen Burnie, a role he assumed in October 2023. Previously, he was President and CEO of F&M Bank Corp. in Virginia's Shenandoah Valley and held senior leadership roles with Eastern Virginia Bankshares, Virginia Company Bank (now part of Primis Financial Corp.), and BB&T. Mr. Hanna is actively engaged with numerous community organizations and non-profits, serving on the 2025 Board of Directors for the Central Maryland Chamber of Commerce and the board for Old Mill High School's International Economics and Finance Signature Program. He has also held advisory roles with state and national banking associations. Mr. Hanna holds a B.S. in Business Administration from Wake Forest University and a MBA from the University of North Carolina at Greensboro.

Afternoon Session: Scaling Smart Without Burnout

Learn why businesses often stall during growth and how to scale sustainably without owner burnout. This session breaks down the essential systems every growing business need, common mistakes to avoid, and practical steps to improve efficiency, profitability, and readiness for future growth—using real-world, local examples and free resources.



Dr. Candace Pruett

Director - Corridor Region Maryland SBDC

Dr. Candace Pruett is the Regional Director for the Maryland Small Business Development Center (SBDC) Corridor Region at the University of Maryland, College Park, where she leads a four-county region supporting entrepreneurs through strategic advising, program leadership, and regional economic development initiatives. She has received multiple national honors, including the Maryland SBDC State Star Award, the MEDA Rising Star Award, and recognition as an ASBDC 40 Under 40 honoree. A GrowthWheel and FranFit Certified Business Advisor, Dr. Pruett holds a Doctorate of Business Administration from the University of Maryland Global Campus, along with an MBA and B.S. in Management from Salisbury University, and her research focuses on generational studies and organizational culture in knowledge transfer.



**ENROLL YOUR
COMPANY NOW
AND EARN A
\$300 WAIVER OF
YOUR SDAT
ANNUAL REPORT
FILING FEE.**

MARYLANDSAVES.COM

**MARYLANDERS SAVE:
IT'S THAT SIMPLE**

For Maryland Small Business Owners and the people
that make them great.



MarylandSaves® is Maryland's state-sponsored retirement savings program

FME

**FORT MEADE
EXECUTIVE AIRPORT**

- **WE ARE YOUR LOCAL GENERAL AVIATION AIRPORT**
- **WE ARE A RELIEVER FOR BWI**
- **WE PROVIDE INITIAL FLIGHT TRAINING, MAINTENANCE, AND FUEL SERVICE**
- **WE ARE HOME FOR MEDSTAR, CHANNEL 4 NEWS, ANNE ARUNDEL COUNTY POLICE AVIATION UNIT**
- **WE ARE HAPPY TO HOST EDUCATIONAL EVENTS AND TOURS**

WWW.FORTMEADEEXECUTIVEAIRPORT.ORG 410-222-6815

At People Rise LLC we help business owners lead their people with clarity— not chaos.



Founder and President Susan S. Mahaffee helps small to mid-size businesses turn workforce challenges into opportunities for growth. **A former global HR executive turned entrepreneur**, Susan partners with business owners to navigate employee issues, streamline and automate HR systems, and strengthen leadership through practical training and coaching.

Through fractional HR support, HR audits, compliance guidance, executive searches, leadership development, and hands-on workshops, **People Rise equips organizations with the tools to build strong teams and scalable people practices.**

Susan also hosts **The Employee Help Desk** podcast and leads two signature programs: the **People Power Masterclass** for business owners and **BOOST™** for new and developing leaders.

This spring, Susan will release her collaborative book - **When People Rise: HR Secrets for Small Business Growth, Success & Legacy.**

If you're ready to build strong teams and scalable people practices,
we would love to support you!



Scan the QR code to learn more!



12:35 PM – 1:30 PM

From Vision to Growth: Business Success Stories in Anne Arundel County

Local entrepreneurs share their real-world journeys of scaling successful businesses in Anne Arundel County. Learn how they accessed capital, mentorship, and technical assistance through AAEDC's Inclusive Ventures Program and other county resources—and how those tools helped turn opportunity into impact.



Wes MacQuilliam - Moderator

Chief Operating Officer - AAEDC

Wesley MacQuilliam serves as Chief Operating Officer of the Anne Arundel Economic Development Corporation (AAEDC), where he leads operational strategy and oversees the organization's marketing, communications, and business development teams. With 15 years at AAEDC, Wesley has played a key role in strengthening programs and expanding the organization's impact across Anne Arundel County. A graduate of Virginia Wesleyan University, he began his career in commercial real estate before joining AAEDC in 2011 and ultimately becoming the organization's first Chief Operating Officer. A lifelong Anne Arundel County resident, Wesley lives in Millersville with his wife and four sons.



Sharon Wilder

Co-Founder & Chief Executive Officer - The Oaks Hospitality Group

Sharon Jackson Wilder, Esq., is the Co-Founder & CEO of The Oaks Hospitality Group and the founder of Spacii, an AI-powered event-venue marketplace transforming how people discover, evaluate, and book space. A Georgetown Law graduate and nationally recognized equity-driven leader, Sharon has built a multi-property boutique hospitality brand known for elegant design, culturally grounded experiences, and community-centered economic impact. Sharon is the 2025 Black in Business "Best in Hospitality" Award recipient and a graduate of the Goldman Sachs 10,000 Small Businesses Program, the Anne Arundel County Inclusive Venture Program, the Montgomery County Black Collective AMBER program, Leadership Montgomery, and Leadership Greater Washington. Through The Oaks, Spacii, and her tech platform LevelUp Spacii, she advances innovation, entrepreneurship, and inclusive economic mobility.



Bailey Feldman

Founder & Chief Executive Officer - Found and Flourish

Bailey Feldman is the Founder and CEO of Fount & Flourish, an intergenerational women's community and coworking space in downtown Annapolis serving over 150 members. As a leadership coach and consultant, she co-facilitates the "Master Your Moxie" program, guiding women through bold career and life transformations, while also offering strategy days and one-on-one leadership support for executives and entrepreneurs navigating growth and change. With a background in international nonprofits and corporate consulting, Bailey brings her expertise as a community builder to create authentic connections and meaningful experiences that bridge generational divides. She balances her entrepreneurial ventures with her role as a mother of three young girls, embodying the intergenerational support and work-life integration at the heart of her mission.



Saeed Ashrafzadeh

Co-Founder - Ashling Hospitality Group

Saeed Ashrafzadeh is the co-founder of Ashling Hospitality Group, a Maryland-based food and beverage company specializing in venue concessions, backstage catering for live music events, restaurant management, and full-service catering. Founded in 2017, Ashling began as an artist-focused catering operation at the historic Lyric Theater, with Disney Live Tours as its first client, and has since expanded across major entertainment venues throughout the DMV, including MGM National Harbor, Capital One Arena, Pier Six Pavilion, and CFG Arena. Today, Ashling operates the full concessions program for the 2,500-seat Lyric Theater, opened a full-service restaurant in 2019, and is now one of Maryland's leading wedding and event catering companies. Saeed is driven by a passion for entrepreneurship and operational excellence, with a long-term goal of building a respected hospitality brand across Maryland and the region.



Zo Olumese

CPA & Founder - ZOKPIA Accounting & Consulting

Zo Olumese is a CPA and founder of ZOKPIA Accounting & Consulting, a Business Financial Services firm that manages over \$17 million in annual client revenue. With 10 years of experience spanning Big Four accounting at Deloitte to running his boutique financial consulting practice, Zo helps business owners understand and leverage their numbers to grow with confidence. Recognized as a Forbes Best-in-State CPA 2025 for Maryland, he delivers financial training for organizations including the FDIC and FSC First, translating complex concepts into actionable insights. Zo's approach empowers entrepreneurs to navigate cash flow, taxes, and financial planning with clarity and CEO-level confidence.



INCLUSIVE VENTURES PROGRAM

Celebrating Excellence

The Inclusive Ventures Program (IVP) is an 8-week program for small, minority-owned, women-owned, and Veteran-owned businesses in Anne Arundel County. IVP offers valuable resources to these businesses to help them succeed and grow including:

Access to capital through the AAEDC VOLT Fund & Microloan Fund

Operating grants to be used for working capital

Business education & mentorship

Invaluable networking opportunities

SCAN TO LEARN MORE



FOLLOW US @ARUNDELBIZ ON    
2660 RIVA ROAD, SUITE 200, ANNAPOLIS, MD 21401
INFO@AAEDC.ORG ■ 410.222.7410



IVP is funded (in part) through a Grant with the U.S. Small Business Administration.



VOLT Fund

POWERED BY MARYLAND DEPARTMENT OF COMMERCE



ANNE ARUNDEL
ECONOMIC DEVELOPMENT CORPORATION

LOANS TO SMALL BUSINESSES

\$25,000 - \$500,000

- Priced at below current market interest rates (4% - 7%).
- Eligible purposes: business acquisition, commercial real estate acquisition, building improvements, equipment purchase, leasehold improvements, business start-up costs, and working capital.
- Eligible entities include start-ups and existing businesses.
- Use of standard underwriting practices; factors to be considered include repayment capacity, financial strength of the company and guarantors, industry and management experience, and collateral protection.

LOAN REQUIREMENTS

- Personal credit (640 or above).
- Historical Debt Service Coverage Ratio (DSCR) of 1.00x or projections with assumptions showing 1.00x DSCR.
- Collateral required when available.
- All owners over 20% must personally guaranty the loan.
- Life insurance on owner/guarantor where no valid succession plan is in place.
- Minimum equity injection of 10% for start-up businesses.

LOAN PROCESS

- Loan processing time of 30 - 90 days.
- Personal tax returns, personal financial statement, business tax returns and business financial statements required for underwriting.
- Business plan with financial projections required for start-ups.

SCAN TO
LEARN MORE



**FOR MORE INFORMATION ABOUT THESE PROGRAMS
PLEASE CONTACT STEPHEN PRIMOSCH AT 410-222-7410
OR BY EMAIL AT SPRIMOSCH@AAEDC.ORG**

FOLLOW US @ARUNDELBIZ    

2660 RIVA ROAD, SUITE 200, ANNAPOLIS, MD 21401
INFO@AAEDC.ORG ■ 410.222.7410

2:15 PM – 3:15 PM
**Access to Capital 101:
From Preparation to Approval**

Designed for entrepreneurs and growing businesses, this session covers how to get loan-ready, what lenders review when evaluating applications, and key differences between conventional and alternative financing options.



Will Holmes - Moderator

Owner - WHC

Will Holmes is the Founder of Will Holmes Consulting (WHC), an award-winning advisory firm that has supported over 12,000 entrepreneurs since 2006 and developed technical solutions for government agencies, financial institutions, and universities worldwide. Recognized as the U.S. Small Business Administration's 2024 Maryland Minority Business of the Year, he is also the author of "Find A Need. Fill A Need. Get Paid." Beyond WHC, Will founded the Baltimore Economic Leadership League to expand opportunities for small and rural businesses, serves as Chairman Emeritus of the Baltimore City Chamber of Commerce, and is Entrepreneur in Residence at Johns Hopkins Carey Business School. Over 700 business owners have completed one of his entrepreneur programs, with more than 80% increasing revenue and creating jobs in their communities.



Steve Primosch

Vice President of Finance - AAEDC

As Vice President of Financial Services at the Anne Arundel Economic Development Corporation (AAEDC), Stephen oversees the organization's lending programs and manages a portfolio of more than 150 small business loans totaling over \$10 million. With more than 20 years of finance and lending experience, he previously held leadership roles at Bank Annapolis and Harbor Bank of Maryland. Stephen holds a bachelor's degree in marketing and an MBA from Frostburg State University and plays a key role at AAEDC in expanding access to capital, including administering more than \$35 million in disaster grant funding to small businesses across Anne Arundel County.



Katherine Hill Ritchie

Senior Director - TEDCO

Katherine has a MBA and over 20 years of finance and investment experience in venture capital, private equity, and hedge funds. She has worked for 4 Billionaire family offices. Her work has focused primarily on sourcing, due diligence, investing and portfolio management of private investments – both direct and fund investments. She also ran 2 broker dealers and has extensive experience in private placements and investment banking. Currently, she is a portfolio manager for the State of Maryland's VC fund, TEDCO, an advisor to a family office, and an active Angel investor. Her work has expanded to also include advising companies and funds on their investments, due diligence, operations, fundraising and strategy.



Jason Weisburg

Senior Vice President - M&T Bank

Jason Weisberg is a banking professional with nearly 15 years of experience in Business Banking. As Senior Vice President and Team Leader at M&T Bank, he leads a team of Relationship Managers and brings expertise in credit, lending, and financial solutions for small and mid-sized enterprises. He combines strong technical banking acumen with a client-first, relationship leadership style. Jason also serves as Vice Chair of the Anne Arundel Economic Development Corporation, supporting business growth and regional economic development.



Anthony Williams

*Executive Vice President & Chief Investment Officer -
MMG Capital*

Anthony Williams is Executive Vice President and Chief Investment Officer at MMG, with over 30 years of experience in the public and private financing, with particular emphasis on small and minority business development, venture capital, and private equity. Since joining MMG in 1998, Williams has 20 years of experience working with MSBDFFA and has overseen portfolio investing, financial planning, underwriting, and monitoring of investments. Previously, he served as President and CEO of Broadcast Capital Fund, Inc., Director of the FCC's Office of Communications Business Opportunities, and held senior roles in multiple venture capital firms. A licensed attorney, Mr. Williams holds a J.D. and M.P.A. from the University of Southern California and a B.A. in Economics from the University of California, Irvine.



Steve Coppinger

Vice President - Republic Capital Access

Steve started his career in finance at Stone Street Capital before starting his own small business, Sherwood Funding, in 2019. Before venturing out on his own, he gained valuable experience at Deltek selling software solutions to government contractors. Steve is a graduate of Bryant University and an ardent supporter of the Bulldogs men's lacrosse team.

WORKFORCE SOLUTIONS FOR BUSINESSES



Take your business to the next level with AAWDC's customized solutions.

- **Build** your future pipeline
- **Attract** skilled candidates
- **Retain** key talent
- **Upskill** star employees

From recruitment and industry awareness to apprenticeships and customized skills training, AAWDC delivers solutions tailored to your business needs.

✉ Learn more and fill out our interest form at www.aawdc.org.

AAWDC's Services are funded in part by federal funds. Please visit www.aawdc.org/fundingsource for the current program year funding levels.



J² EDUCATION AND WELLNESS, LLC

ON-SITE CPR TRAINING FOR BUSINESSES AND INDIVIDUALS

J² Education and Wellness provides high-quality CPR and safety training for businesses, organizations, and individuals across Maryland and D.C.

TRAIN WITH CONFIDENCE.

RESPOND WITH SKILL.

Our Training Services



BLS PROVIDER TRAINING

BLS Certification for healthcare professionals and students. American Heart Association and American Red Cross certifications available.



CPR, AED & FIRST AID TRAINING

Training for workplaces, childcare providers, fitness facilities, and community organizations. Courses are designed to build confidence and real-world readiness.



ON-SITE AND MOBILE GROUP TRAINING

Convenient training delivered at your workplace or organization, with flexible scheduling for staff, teams, and group sessions.

Empower. Educate. Elevate.

Schedule a Training or Learn More

(410) 571-4704

info@j2educationandwellness.com

Serving Maryland and Washington, D.C.

www.j2educationandwellness.com

Building Confidence through Training



Comcast Business is proud to be a sponsor of the **2026 ARUNDEL BIZ EXPO**.

With advanced, scalable solutions for small business, fast and reliable speeds, and 24/7 customer support, Comcast Business is powering the engine of modern business.

Learn more at ComcastBusiness.com.



COMCAST BUSINESS

© 2025 Comcast.



MAKE YOUR SMALL BUSINESS A SUCCESS

Visit www.marylandsbdc.org to learn how we can help your business start, grow, and thrive.



The Maryland SBDC Program is funded in part through a Cooperative Agreement with the U.S. Small Business Administration.



No Cost Consulting • Low Cost Training • Access to Capital



annearundelmoms.com

@annearundelmoms



YOUR LOCAL IT & CYBERSECURITY PARTNER

MANAGED IT SERVICES:

- ✓ WE HANDLE YOUR DAY-TO-DAY TECHNOLOGY—SUPPORT, MONITORING, UPDATES, AND MAINTENANCE.

CYBERSECURITY THAT WORKS:

- ✓ FROM ENDPOINT PROTECTION TO EMAIL SECURITY AND USER TRAINING, WE HELP PROTECT YOUR BUSINESS FROM REAL-WORLD THREATS.

LOCAL, RESPONSIVE SUPPORT:

- ✓ YOU GET A TEAM THAT UNDERSTANDS LOCAL BUSINESSES AND RESPONDS WHEN YOU NEED HELP—NO CALL CENTER RUNAROUND.

LET'S TALK IT & CYBERSECURITY

www.summitbiztech.com



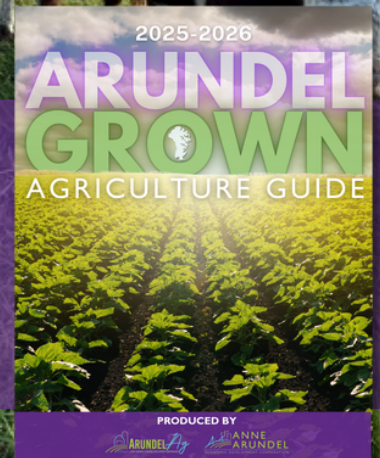
SAVE THE DATE
August 5, 2026



**DOWNLOAD THE FARMERS
MARKETS GUIDE HERE:**



**DOWNLOAD THE ARUNDEL
GROWN AG GUIDE HERE:**





OUR MISSION

We foster diverse economic growth by empowering businesses, expanding employment opportunities, and revitalizing communities. As the go-to partner, we connect businesses in Anne Arundel County with the key resources to thrive.

MEET OUR TEAM

PRESIDENT & CEO

Amy Gowan

CHIEF OPERATING OFFICER

Wes MacQuilliam

**VICE PRESIDENT,
FINANCIAL SERVICES**

Steve Primosch

**VP MARKETING &
COMMUNICATIONS**

Victoria Zelefsky

**VICE PRESIDENT,
ADMINISTRATION**

Lisa Grunder

CHIEF OF STAFF

Christina Holliday

**DIRECTOR OF RESEARCH &
PROGRAM DEVELOPMENT**

Jonathan Boniface

OFFICE MANAGER

Jennifer Ball

**BUSINESS
DEVELOPMENT
DIRECTOR**

Jill Porter

**BUSINESS
DEVELOPMENT
DIRECTOR**

Anita Dewling

**BUSINESS
DEVELOPMENT
DIRECTOR**

Barbara Quayle

**BUSINESS
DEVELOPMENT
DIRECTOR**

Shelley Garrett

**TOWN CENTER
REVITALIZATION MGR**

**Kayleigh De La
Puente**

SENIOR LOAN ADMINISTRATOR

Dawn Seaton

LOAN ADMINISTRATOR

Kelly Hall

LOAN UNDERWRITER

Timothy Sharp

**MARKETING &
OUTREACH MANAGER**

Steve Adams

CREATIVE & IT MANAGER

Grayson Orphe

MARKETING INTERN

Maddalyn Kunst

MEET OUR BOARD

GREENBERG GIBBONS

Eric Devito (Chairman)

M&T BANK

Jason Weisberg (Vice Chair)

CFG BANK

Kevin Carter (Treasurer)

**UNIVERSITY OF MARYLAND BALTIMORE
WASHINGTON MEDICAL CENTER**

Kathy McCollum (Secretary)

AAEDC

Amy Gowan (Ex Officio)

GABLE SIGNS, INC.

Paul Gable

**MACKENZIE COMMERCIAL
REAL ESTATE**

Trish Farrell

**NORTHROP GRUMMAN
MISSION SYSTEMS**

Scott Orlove

**SKIPPER'S PIER RESTAURANT
& DOCK BAR**

Dave Rosage

FARMER MAC

Brad Nordholm

MESAVITA ENGINEERING, LLC

Dan Catrambone

FAISON LAW GROUP, LLC

M. James Faison

KG TRUCK & AUTO

Stephanie Gary

ARUNDEL BIZ 2026 EXPO



Powered by 

AAEDC.org

Follow Us @ArundelBiz



**ACCESS EXPO
RESOURCES HERE**

